

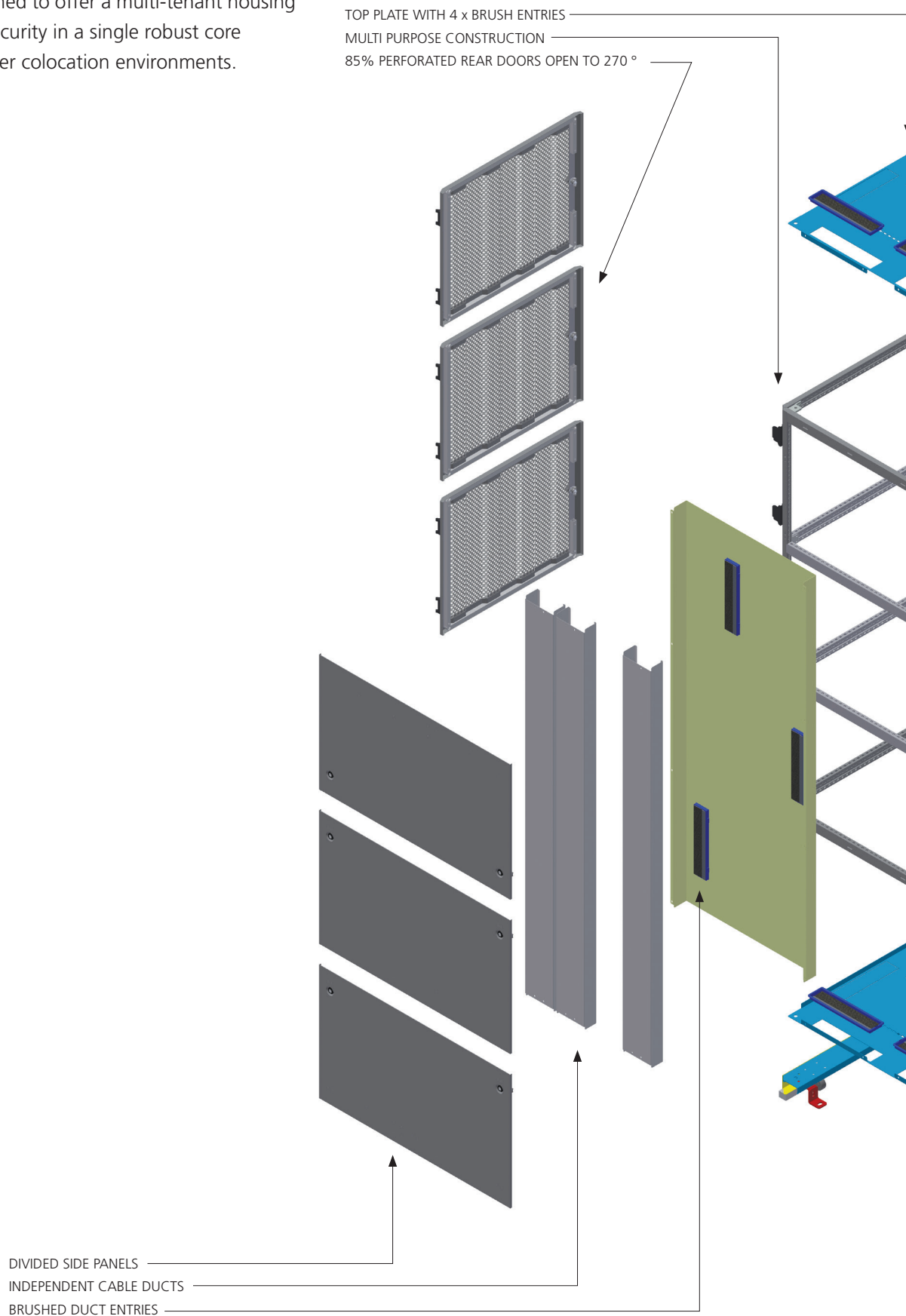
KL Series Enclosures

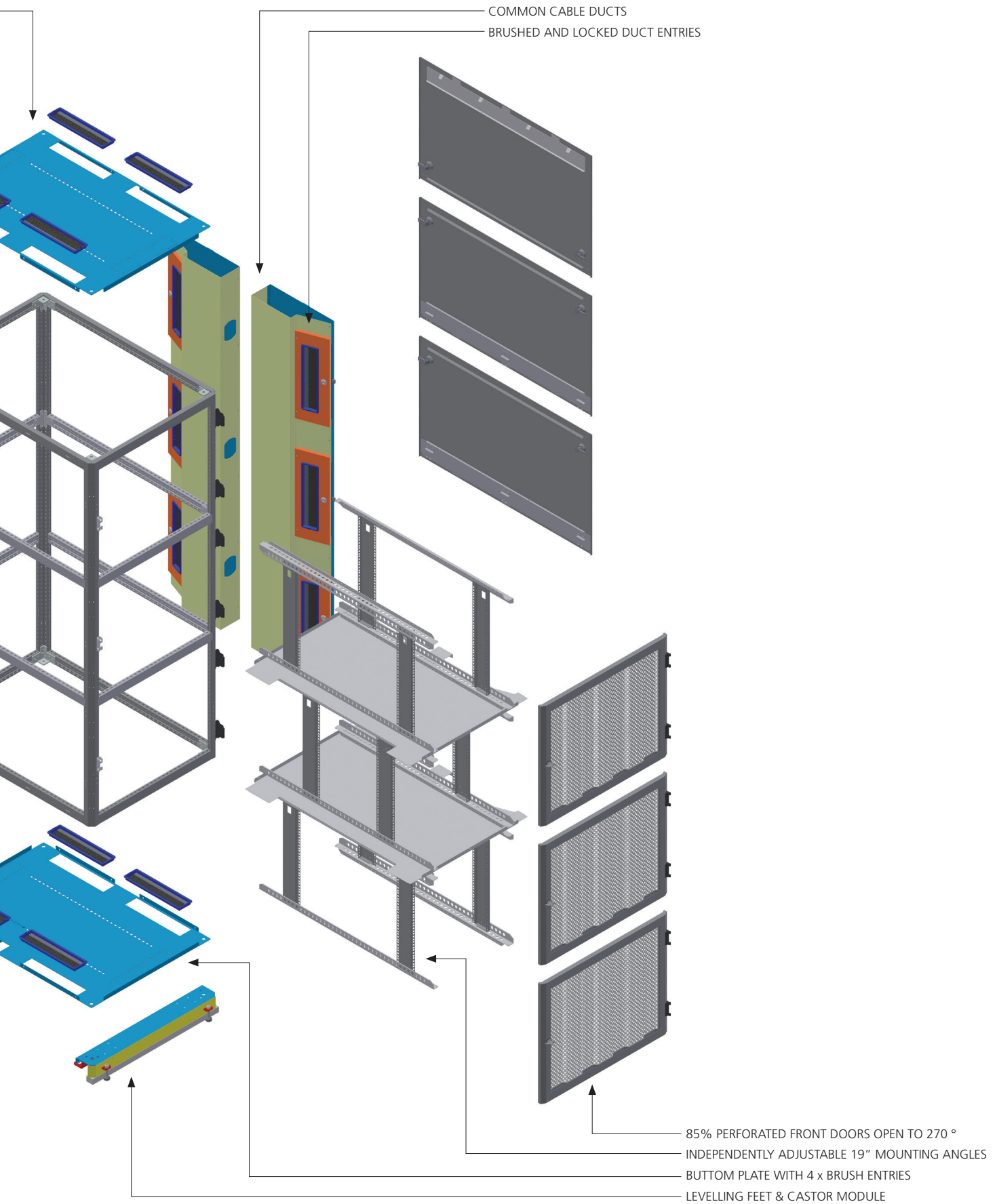


KabinPLUS

General Features

KabinPLUS KL Series 19" Data Center Colocation Rack Cabinets have been designed to offer a multi-tenant housing with high flexibility and security in a single robust core construction for data center colocation environments.

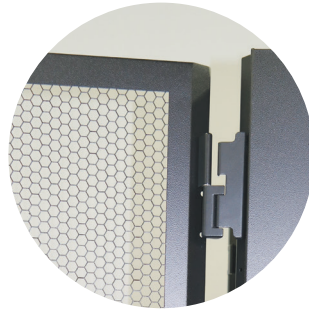




General Features



19" Independent Vertical Mounting Rails; easy and independently adjustable for each bay, manually displaceable with U marking on both sides



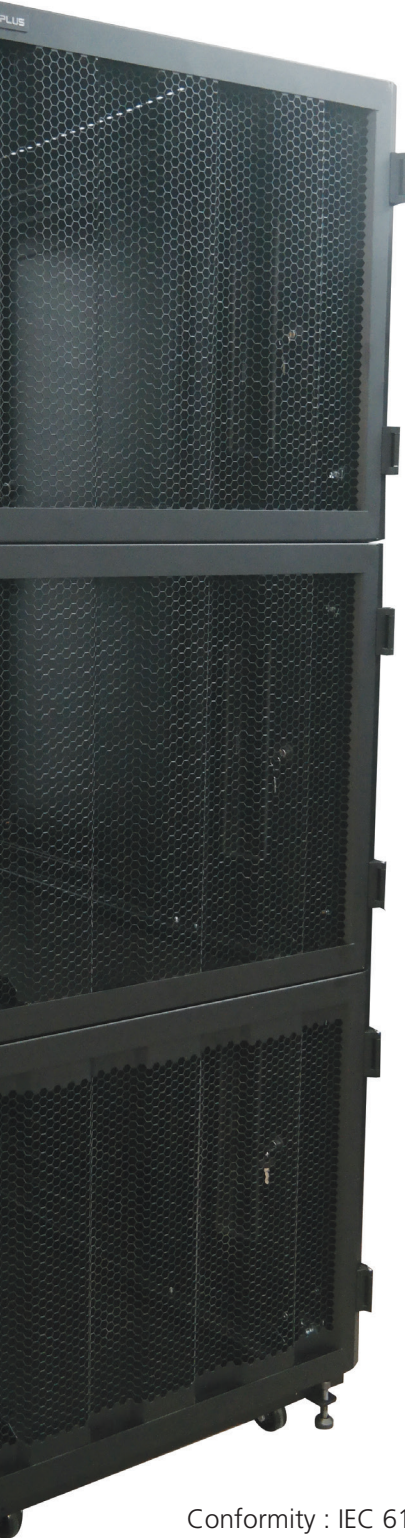
Doors; single front and single rear door naturally ventilated by 85% perforation, opens to 180/270 degrees when bayed/not bayed, easily displaceable (optional)

Side Panels; divided panels, lockable

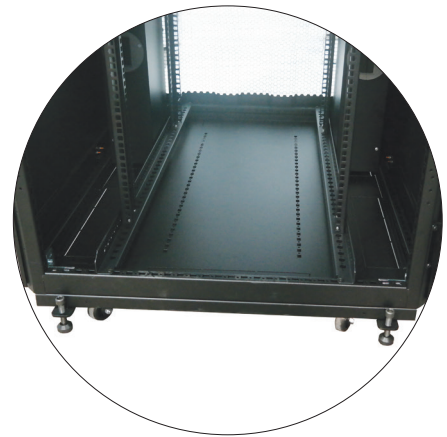


Enclosure Dimensions

Heights (in Rack Units)	Baying	Width	Depths
42U	2 x 1 bay of 20U 1 bay of 21U	800 mm	1000/1100/1200 mm.
	3 x 2 bays of 13U each 1 bay of 14U	800 mm	1000/1100/1200 mm.
	4 x 3 bays of 10U each 1 bay of 9U	800 mm	1000/1100/1200 mm.
47U	2 x 1 bay of 22U 1 bay of 23U	800 mm	1000/1100/1200 mm.
	3 x 1 bays of 15U	800 mm	1000/1100/1200 mm.
	4 x 1 bays of 11U	800 mm	1000/1100/1200 mm.



Top and Bottom Panels; with 6 x knockout cable entry areas aligned on the cable ducts with brushes, also overhead cable management on the top panel as option

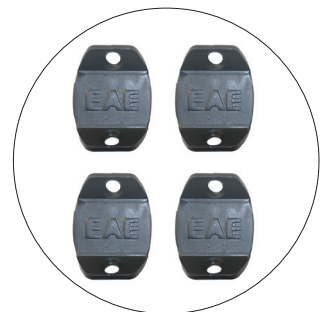


Levelling Feet & Castor Module; heavy duty easy drive levelling feet with castors



Electrical Bonding; full electrical bonding of the rack cabinet, doors-side & roof & bottom panels with the reference bonding point

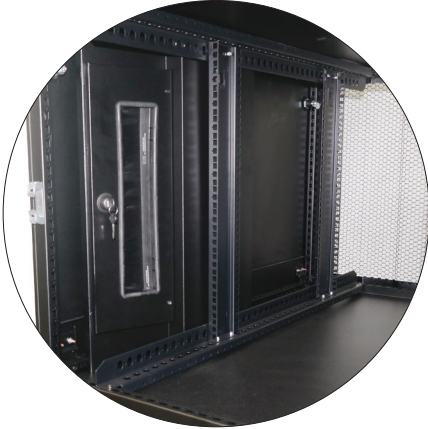
Baying Brackets; easy baying on the front and back sides



Conformity : IEC 61587-1, UL 2416, IEC 60082-2, EIA 310-E, ISO 9227, ASTM B 117 for mechanical properties IEC 61010-1, IEC 60950-1 for electrical properties

Load Carrying Capacity : 1200 kg static load (according to IEC 61587-1)
1500 kg static load (tested for UL 2416)
1500 kg dynamic load (tested for UL 1678)

Ducting Features



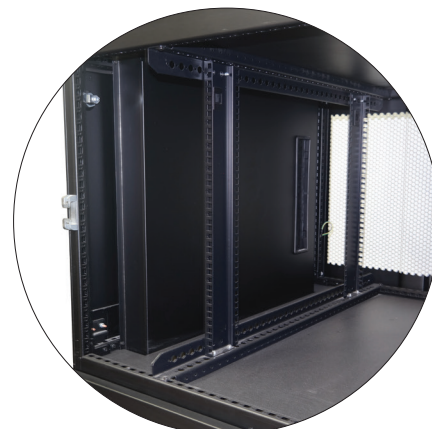
Cable Pathways with Common Ducting:

All the cables can be installed in a side common duct with an individual brushed bay access to serve each bay independently by service providing company only and secured by locking mechanism with top and bottom cable entry points. Four (4) independent Common Ducts (2 x right + 2 x left) are deployable on a single colocation enclosure



Cable Pathways with Independent Ducting:

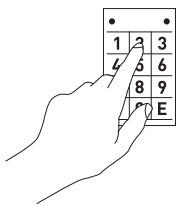
The cable ducts are designed as independent cable pathways to accommodate cabling for each individual bay separately with top and bottom cable entry points. Each bay has its own brushed individual access to its independent cable duct area. Two (2) Independent Ducts (1 x right + 1 x left) are deployable on a single colocation enclosure.



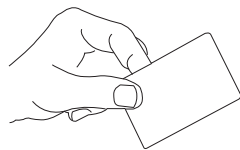
Locking Mechanisms



For the physical security and monitored access to your critical infrastructure KabinPLUS KL 19" Data Center Colocation Rack Cabinets offer various locking mechanism and open access connectivity. Mechanical and electro-mechanical locking, keypad access, proximity card access, finger print, eye retina or hand geometry biometric access and their combinations are among the available choices.



key pad



proximity



finger print



eye retina

Cabling Features

Vertical Cable Management; plastic finger cable organizer, plastic ring cable organizer, metal ring cable organizer, vertical cable tray



Overhead (Roof) Cable Management; toolless mounting of "M" shaped and "A" shaped separators & cable pathways

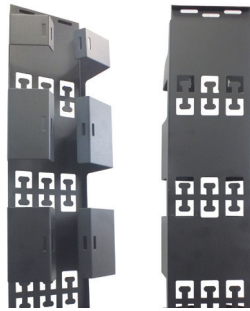


Accessories

Cable Management



Cable Finger Organizer



Vertical Cable Trays



Cable Organizers

Cable Management

Air Blocking Panels



Overhead Cable Management



Vertical Air Blocking Panels

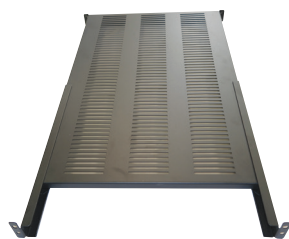


Horizontal Air Blocking Panels
1U 6U, Toolless

Shelves & L-Support Rails



Rack Mount Shelf
(2 points fixing)



Fixed Shelf
(4 points fixing)



Sliding Shelf
(4 points fixing)



L-Support Rails

Levelling Feet & Castor Sets & Baying Kit



Levelling Feet & Castor Module



Levelling Feet for Cabinets
(1 set = 4 pcs)

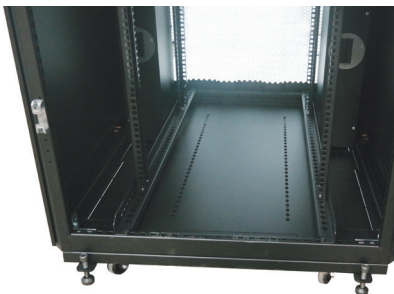


Castor Set for Cabinets
(1 set = 4 pcs, 2 with brakes)



Baying Kit for Cabinets

Cabinet Bottom Cover Plates



Bottom Cover Plates

Brush Kits

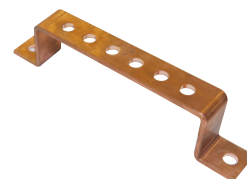


Brush Kits for KD Server & Network Rack Cabinets

Grounding Kits & Potential Equalizer Bar



Grounding Kit for Server & Network
Cabinets



Potential Equalizer Bar

KabinPLUS Data Center Rack Cabinets - KL COLOCATION



Description	: Free Standing 19" Colocation Multi-Tenant Rack Cabinet for Data Center Environments as single unit or as row formation unit
Dimensions	: 42/47 Rack Units; (2/3/4 bay options) 800 x 1000 / 1100 / 1200 (width x depth in mm) 42U baying configurations; 20U+21U, 13U+13U+14U, 10U+10U+10U+9U 47U baying configurations; 22U+23U, 15U+15U+15U, 11U+11U+11U+11U
Construction	: Sheet Steel, Welded/Bolted frame
Color	: RAL 7035 Gray or RAL 9005 Black
Loading	: 1200 kg (static) - certified according to EN 61587-1 1500 kg static (UL 2416), 1500 kg dynamic (UL 1678)
Protection	: IP 20
Profiles	: Independent and easily adjustable on each bay with double side U marking (1,5mm + 2,5mm) steel thickness.
Features	: <ul style="list-style-type: none"> • doors; single front and single rear door, - naturally ventilated by 85% perforation , opens to 180/270 degrees when bayed/not bayed, easily displaceable (optional) • locks ; mechanical, electrical and biometric locking mechanisms applicable individually for for each bay, detachable split side panels with key locks on each bay • ducting ; <ul style="list-style-type: none"> Cable Pathways with Common Ducting: All the cables can be installed in a side common duct with an individual bay access to serve each bay independently by service providing company only and secured by locking mechanism with top and bottom cable entry points. Four (4) independent Common Ducts (2 x right+ 2 x left) are deployable on a single Cable Pathways with Independent Ducting: The cable ducts are designed as independent cable pathways to accomodate cabling for each individual bay separately with top and bottom cable entry points. Each bay has its own brushed individual access to its independent cable duct area. Two (2) Independent Ducts (1 x right + 1 x left) is deployable on a single colocation enclosure. • cable management ; Top and Bottom panels with 6 x knock-out cable entry areas aligned on the cable ducts with brushes, also tool-less overhead cable management on the top panel as option management by "M" or "A" shaped separators for data and power cables, vertical plastic finger ducts, horizontal cable organizers, PDU brackets. • fixing; for normal or raised floor and/or with seismic plinth options, also easily baying • grounding ; all internal parts and the frame with a main ground lug
Certifications	: <ul style="list-style-type: none"> • mechanical; IEC 61587-1, UL 2416, IEC 60068-2, EIA 310-E, ISO 9227, ASTM B 117 • electrical; IEC 61010-1, IEC 60950-1
Packaging	: Assembled or Flat Pack



ATTESTATION OF CONFORMITY

Issued to: EAE Elektroteknik San. Ve Tic. A.S.
 Ikitelli Organize Sanayi
 Bölgesi Eski Turgut Özal
 Caddesi No 20
 34490 Ikitelli - Istanbul
 Turkey

For the product: IT Cabinets

Trade name: EAE

Type/Model: KabinPlus

Ratings: Classification SL6, K3 and IP20

Manufactured by: EAE Elektroteknik San. Ve Tic. A.S.
 Ikitelli Organize Sanayi
 Bölgesi Eski Turgut Özal
 Caddesi No 20
 34490 Ikitelli - Istanbul
 Turkey

Subject: Mechanical tests and safety aspects

Requirements: IEC 61587-1:2012, clauses 7.3.1, 7.3.2, 7.3.4, 3.2 and 3.4

Remarks: -

This Attestation of Conformity is granted on account of an examination by DEKRA, the results of which are laid down in report no. 2191220.024NC, 9 February, 2016.

The examination has been carried out on single samples of multiple configurations representative of the product, submitted by the manufacturer. The Attestation does not include an assessment of the manufacturer's production. Conformity of his production with the specimen tested by DEKRA is not the responsibility of DEKRA.

Arnhem, 9 February, 2016 Number: 2191220.02A

DEKRA Certification B.V.

H.R.M. Barends
 Certification Manager

© Integral publication of this attestation and adjoining reports is allowed

DEKRA Certification B.V. Meander 1051, 6825 MJ Arnhem P.O. Box 5185, 6802 ED Arnhem, The Netherlands
 T +31 88 96 83000 F +31 88 96 83100 www.dekra-certification.com Company registration 09085396

NWIN.E489314
Audio/Video, Information and Communication Technology Equipment Cabinet, Enclosure and Rack Systems

[Page Bottom](#)

Audio/Video, Information and Communication Technology Equipment Cabinet, Enclosure and Rack Systems

[See General Information for Audio/Video, Information and Communication Technology Equipment Cabinet, Enclosure and Rack Systems](#)

EAE ELEKTROTEKNIK SAN VE TIC A S
 IKITELLI ORGANIZE SANAYI BOLGESI ZIYA
 GOKALP MH ESKI TURGUT OZAL CD NO 20
 BASAKSEHIR
 34490 ISTANBUL, BASAKSEHIR TURKEY

E489314

IT Cabinet Systems, "KD", Model(s) KabinPlus

[Last Updated](#) on 2017-11-13

[Questions?](#) [Print this page](#) [Terms of Use](#) [Page Top](#)

© 2017 UL LLC

The appearance of a company's name or product in this database does not in itself assure that products so identified have been manufactured under UL's Follow-Up Service. Only those products bearing the UL Mark should be considered to be Certified and covered under UL's Follow-Up Service. Always look for the Mark on the product.

UL permits the reproduction of the material contained in the Online Certification Directory subject to the following conditions: 1. The Guide Information, Assemblies, Constructions, Designs, Systems, and/or Certifications (files) must be presented in their entirety and in a non-misleading manner, without any manipulation of the data (or drawings). 2. The statement "Reprinted from the Online Certifications Directory with permission from UL" must appear adjacent to the extracted material. In addition, the reprinted material must include a copyright notice in the following format: "© 2017 UL LLC".



ELEKTROTEKNİK

www.eaeelektroteknik.com

EAE Elektroteknik A.Ş.

İkitelli Organize San. Bolg.

Eski Turgut Ozal Cad.

Ziya Gokalp Mah. No: 20

34490 Basakşehir - İstanbul / TURKEY

Phone : +90 212 549 26 39

Fax : +90 212 549 37 91

www.kabinplus.com

kabinplus@eae.com.tr

KL-ENG-1117-1000