



GALIS EXPROOF

28 W Exproof LED Lighting Fixture
Group II, Category 3, (Zone 2 / 21)



Order Code : 3280282
Product Code : GLS 028U 40EX00 4K11 90 Z2.21

Product Data

Exproof Product Features

Area	: Zone 2 / 21
Group/Category	: 3G / 2D
Protection Class	: nR / tb
Explosion Group	: IIC / IIIC
Maximum Surface Temperature Class	: T6 / T85°C
Certificate Code	: EX II 3G Ex nR op IIC T6 Gc EX II 2D Ex tb op IIIC T85°C Db

Standard Features

Housing	: Aluminium extrusion housing
Diffuser	: Transparent glass
IP Grade	: IP66
Installation	: Surface mounted
Light Source	: Mid Power LED
Electronic Control	: On-Off

Optical & Electrical Features

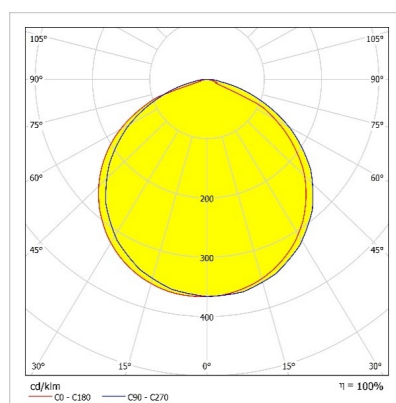
Power Consumption	: 28.2 W
Final Luminous Flux	: 4073.1 lm
Efficacy	: 144 lm/W
Input Voltage	: 220-240 V AC
Frequency	: 50-60 Hz
Power Factor	: > 0,9
Surge Transient Protection	: 1 kV
Drive Current	: 700 mA
Correlated Color Temperature	: 4000K
Color Rendering Index	: >80
Photobiological Risk Group	: RG1

* There is $\pm 10\%$ Tolerance in Technical Values.

Other Features & Conditions

Operating Temperature Range	: -25 °C/+40 °C
Operating Temperature Range With Emergency Kit	: +5 °C/+35 °C
Impact Resistance	: IK09
Led Life Time - L70	: > 72.000 hours @Ta= 40 °C

Photometric Curve



Optional Features

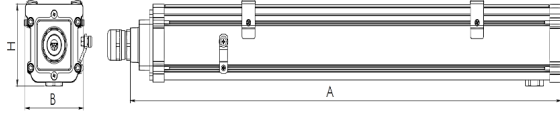
Correlated Color Temperatures	: 3000K, 6500K
Emergency Kit Options	: 1, 3 hours
DALI Option	: Yes

GALIS EXPROOF

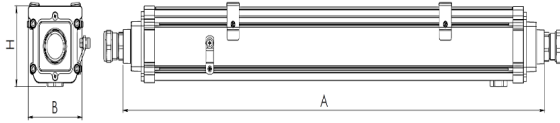
28 W Exproof LED Lighting Fixture
Group II, Category 3, (Zone 2 / 21)

3280282 GLS 028U 40EX00 4K11 90 Z2.21

Standard



Through Wiring

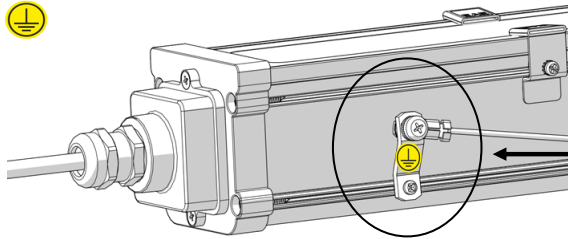


Dimension (mm)

	a	b	h
Standard	886	76	71
1 - 3 hours ACK*	886	76	71
Through Wiring	915	76	71
Through Wiring ACK*	915	76	71

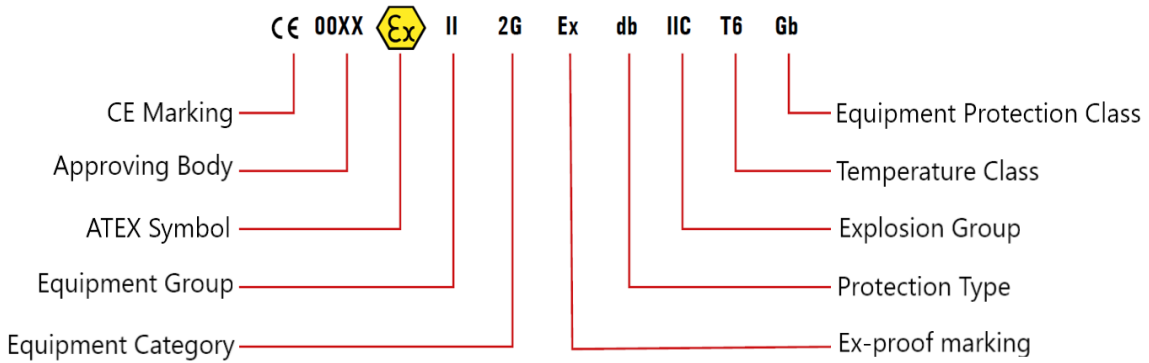
Weight (kg)

Standard	3,2
1 - 3 hours ACK*	3,6
Through Wiring	3,3
Through Wiring ACK*	3,7



Gövdenin dışarıdan topraklanabilmesi için dizayn edilmiş bölümdür. / It is the section designed for the body to be grounded from the outside.

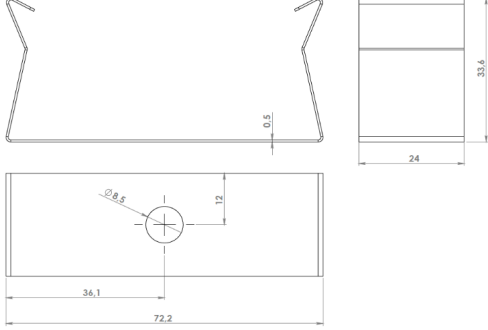
Reading Label Information



GALIS EXPROOF

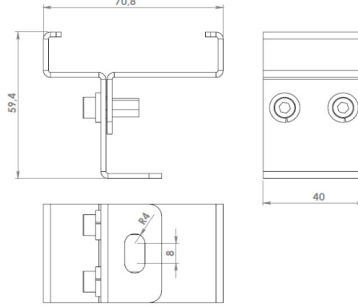
28 W Exproof LED Lighting Fixture
Group II, Category 3, (Zone 2 / 21)

3280282 GLS 028U 40EX00 4K11 90 Z2.21



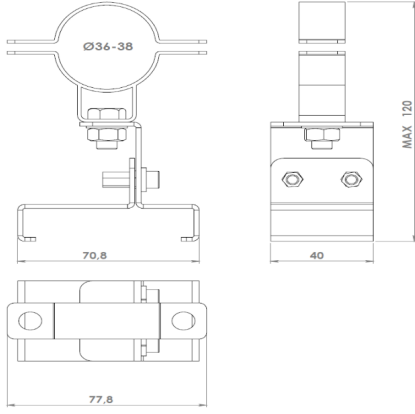
Order Code : 1006876

Product Code : FASTENING SPRING



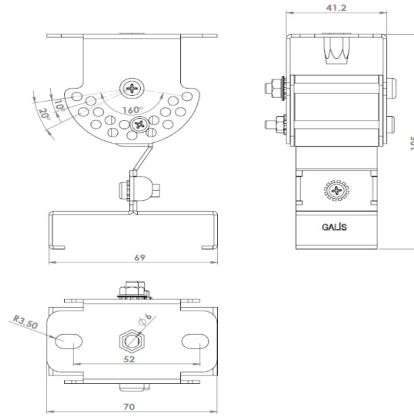
Order Code : 3164773

Product Code : GALIS FIXED HANGER KIT



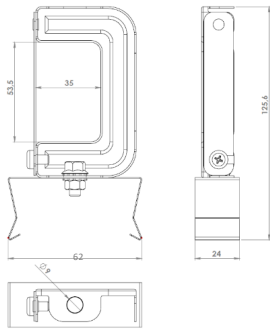
Order Code : 3290438

Product Code : GALIS FIXED PIPE HANGING KIT (Ø31-Ø38)



Order Code : 3236243

Product Code : GALIS ADJUSTABLE HANGER KIT



Order Code : 3290008

Product Code : GALIS BOX PROFILE hanger set

- EAE, reserves the right to make changes without prior notice.

EAE Aydınlatma A.Ş.
İktisadi Organize Sanayi Bölgesi Eski Turgut Özal Caddesi No:20 Başakşehir / İSTANBUL - TURKEY Phone: +90 212 413 21 00 (pbx) Fax: +90 212 549 37 90
www.eaeaydinlatma.com.tr

Revision date: 05.01.2024