



# RA

45 W LED Lighting luminaire for street Lighting



Order Code : 3266996  
Product Code : RA 046D 40SC00 110 6K00 CLASS II

## Product Data

### Standard Features

Housing	: SW 306G painted aluminium injection housing
Diffuser	: Tempered transparent glass
Optic	: 110° lens
IP Grade	: IP66
Installation	: Pole mounted
Light Source	: Power LED

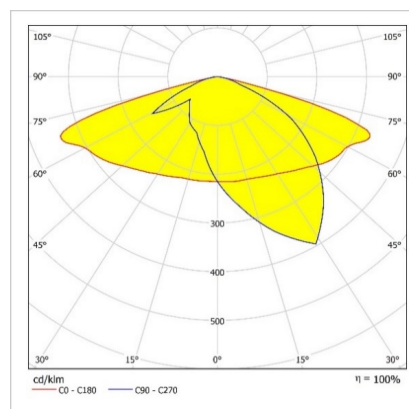
### Optical & Electrical Features

Power Consumption	: 45 W
Final Luminous Flux	: 6580 lm
Efficacy	: 146 lm/W
Input Voltage	: 220-240 V AC
Frequency	: 50-60 Hz
Power Factor	: > 0,9
Surge Transient Protection	: 4 kV
Drive Current	: 275 mA
Correlated Color Temperature	: 4000K
Color Rendering Index	: >70

### Other Features & Conditions

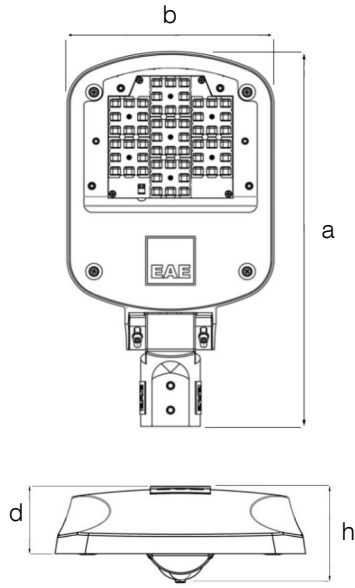
Operating Temperature Range	: -30 °C/+45 °C
Impact Resistance	: IK09
Led Life Time - L70	: > 102.000 saat @Ta= 45 °C
Earthing Class	: Class II

## Photometric Curve



### Optional Features

Correlated Color Temperatures	: 3000K, 5000K, 5700K, 6500K
DALI	: Dali, Dimko, RF, Nema, Zaga



## RA

45 W LED Lighting luminaire for street Lighting

3266996 RA 046D 40SC00 110 6K00 CLASS II

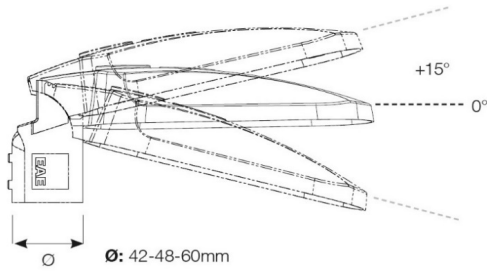
### Dimensions (mm)

	a	b	h	d
Standard	460	250	105	68

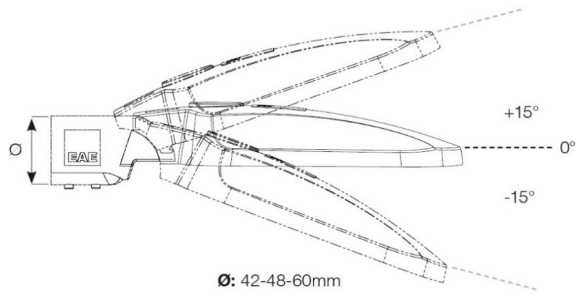
### Weight (kg)

Standard	5,4
----------	-----

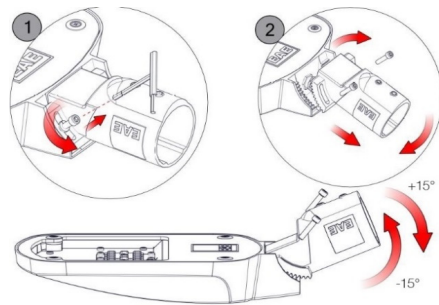
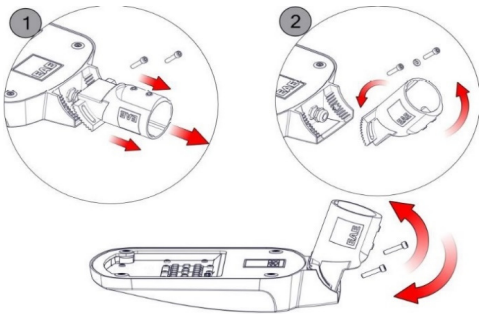
### Vertical Installation Brackets



### Horizontal Installation Brackets



### Vertical or Horizontal Application With Same Brackets



- EAE, reserves the right to make changes without prior notice.

**engineering the light**

**EAE Aydınlatma A.Ş.**  
İkitelli Organize Sanayi Bölgesi Eski Turgut Özal Caddesi No:20 Başakşehir / İSTANBUL-TÜRKYE Phone: +90 212 413 21 00 (pbx) Fax: +90 212 549 37 90  
[www.eaeaydinlatma.com.tr](http://www.eaeaydinlatma.com.tr)

Revision date: 02.11.2022